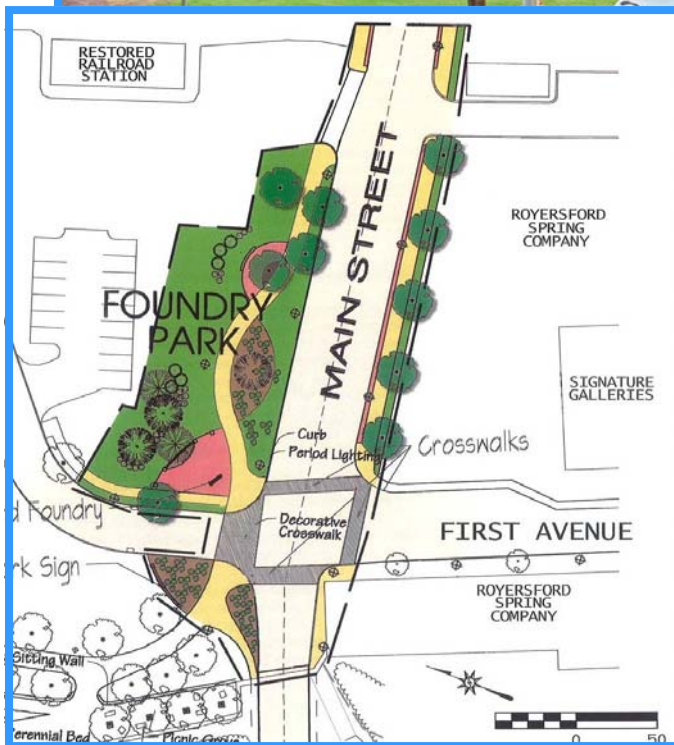


Green Fields/Green Towns Update: Fall 2009
Royersford Borough Gateway Enhancement Project
Green Infrastructure Grant Approved 2007 • Project in Design Phase



Top - Gateway area awaiting construction; Above Left - Concept plan; Above Right - Riverfront along gateway area

GF/GT Green Infrastructure Grant:

- County Grant: \$165,000
- Borough Funds: \$60,000

●Total Project Cost: \$550,000

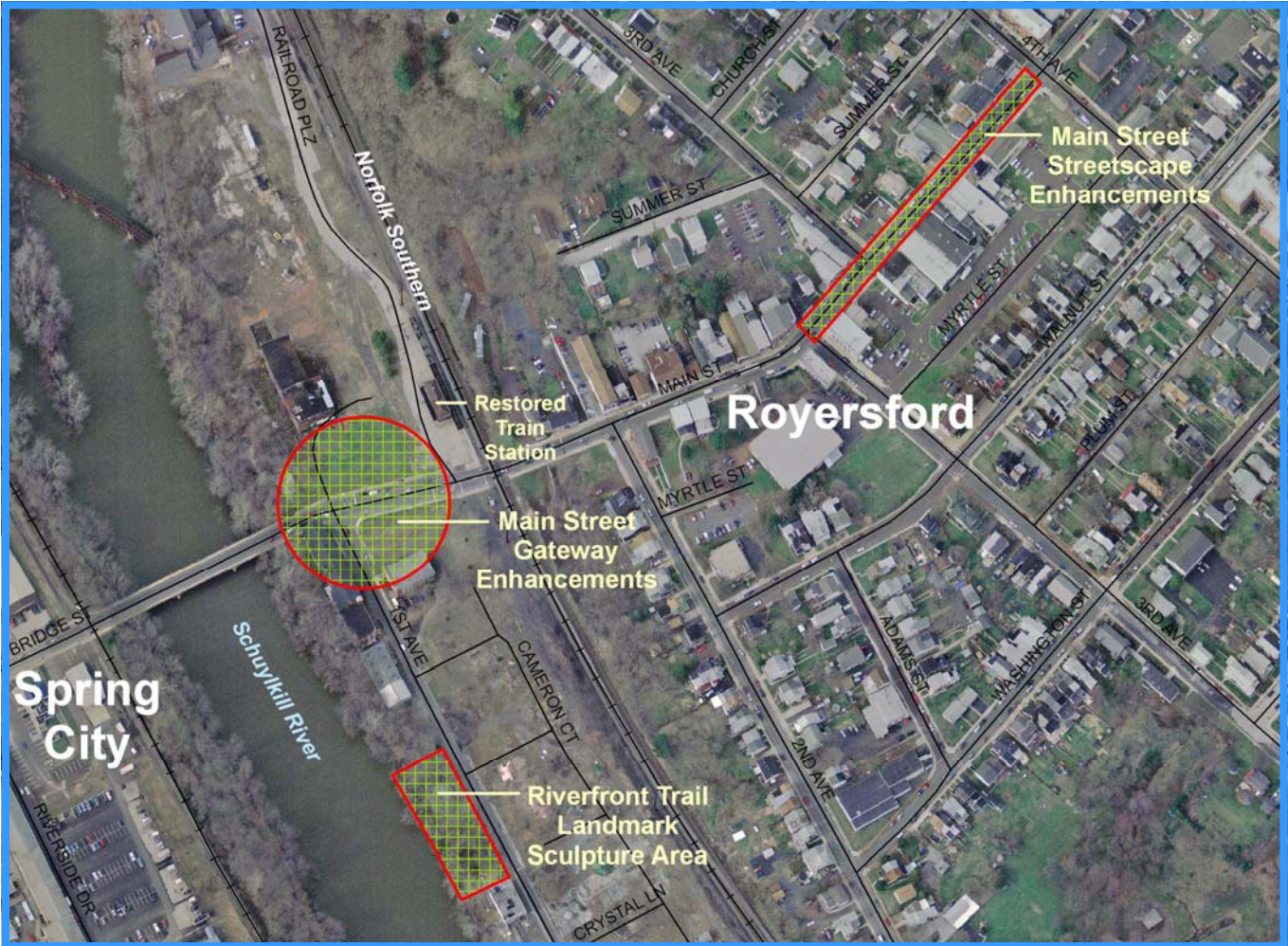
●Total Matching Funds: \$385,000

●County Revitalization Funds: \$275,000 ●Heritage Area Grant: \$50,000

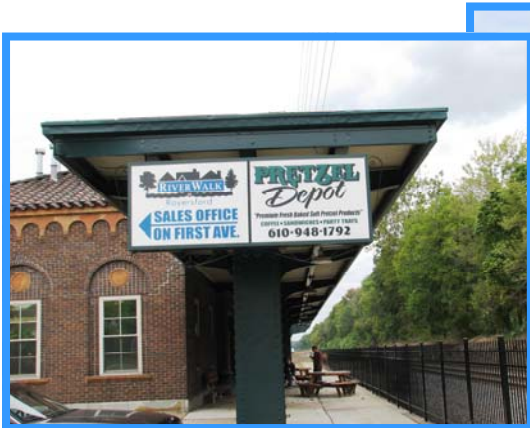
Project Description:

- Major entrance to Borough via Schuylkill River bridge; sets tone for Borough character
- Staging area for riverfront trail and future Foundry Park on open space parcel acquired with previous County grant
- Combines revitalization, pedestrian amenities, recreation, and greenway connections
- Construction schedule to be determined

Green Fields/Green Towns Update: Fall 2009
Royersford Borough Gateway Enhancement Project
Green Infrastructure Grant Approved 2007 • Project in Design Phase



Project Location: Main Street between Schuylkill River and Norfolk Southern rail line
Public access via sidewalk; gateway plaza not yet constructed



Above - Restored train station



Middle - Future gateway plaza area



Right - River bridge to Spring City