

Green Fields/Green Towns Update: Fall 2009
West Pottsgrove Township Schwab Property Acquisition
2009 • 10.5 acres



All photos show scenic stream corridor and forest of large flood plain trees on Schwab open space

GF/GT Acquisition Grant:

- **County Funds:** \$65,600
- **Appraised Value:** \$80,000

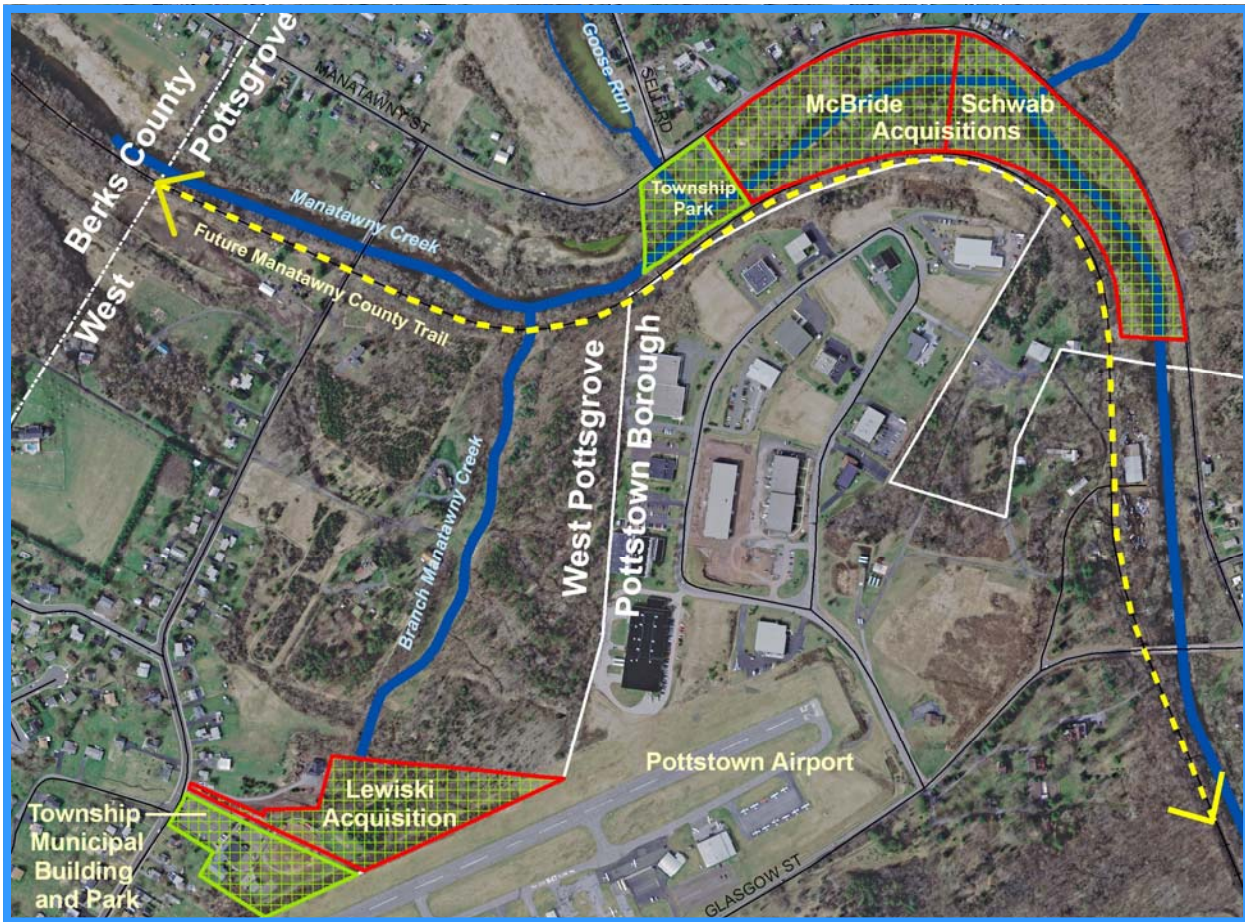
● **Total Project Cost:** \$82,000

● **Matching Funds:** \$16,400 Township (PA DCNR grant pending)

Property Description:

- Partially wooded flood plain parcel along Manatawny Creek; adjoins recent McBride acquisition
- Provides stream corridor protection, scenic view from Manatawny Street, and opportunity for greenway path
- Located across Manatawny Creek from future Manatawny County Trail on Colebrookdale rail spur
- Township will continue preservation efforts on additional stream corridor properties

Green Fields/Green Towns Update: Fall 2009
West Pottsgrove Township Schwab Property Acquisition
2009 • 10.29 acres



*Project Location: Manatawny Street adjoining McBride open space acquisition
Public access and parking at nearby township park; mown path very overgrown*



View toward Manatawny Street over Schwab meadow and woodland